



Stellar

Migrator for MS Exchange 1.0

Installation Guide

Overview

Stellar Migrator for MS Exchange enables you to migrate mailboxes from one MS Exchange server to other. The software exports mailboxes from Donor Exchange server to PST files that can be imported in MS Outlook. Additionally, you can also preview mailbox items including Emails, Contacts, Calendar, Notes, Tasks, Attachments etc.

The server from where you need to migrate the mailboxes into another is known as Donor Exchange and the intended destination server to where all these mailboxes are migrated is known as Recipient Exchange. The configurations are handled on the Local System as well as on Donor Exchange server. To migrate mailboxes, you need an Impersonate User on the Donor Exchange along with the Impersonate Profile of donor and an Administrator Profile of Recipient Exchange configured on your local system and Donor Exchange server.

Key Features

- Supports migration of complete mailboxes.
- Export user mailboxes to PST on local system.
- Export user mailboxes to Recipient Exchange.
- Save selective mailboxes to PST files.
- Supports automap feature using mailbox names and E-mail Id's.
- Save individual mail items in MSG, EML, HTML, RTF, PDF formats.
- Option to preview mailbox data including Emails, Contacts, Calendar, Notes, Tasks, Attachments, etc.
- Supports MS Outlook 2013 / 2010.
- Supports MS Exchange Server 2013 / 2010.
- Supports Windows 10 / Windows 8.1 / Windows 8 / Windows 7 / Windows Server 2008 / Windows Server 2012.

Installation Procedure

Before installing the software, check that your system meets the minimum system requirements:

Minimum System Requirements:

- **Processor:** Pentium Class
- **Operating System:** Windows 10 / Windows 8.1 / Windows 8 / Windows 7 / Windows Server 2008 / Windows Server 2012
- **Memory:** Minimum 1 GB
- **Hard Disk:** 50 MB of Free Space
- **MS Outlook:** 2013, 2010

Note:

- *To export your Contacts and Tasks, **Exchange Server 2010 (Service Pack 3 and above)** must be installed.*
- ***.NET Framework 4.0 and above** must be installed.*

To install the software, follow these steps:

- Double-click **StellarMigratorforMSEExchange.exe** executable file to start installation. **Setup-Stellar Migrator for MS Exchange** dialog box is displayed.
- Click **Next. License Agreement** dialog box is displayed.
- Choose **I accept the agreement** option. **Next** button will be enabled. Click **Next. Select Destination Location** dialog box is displayed.
- Click **Browse** to select the destination path where the setup files will be stored. Click **Next. Select Start Menu Folder** dialog box is displayed.
- Click **Browse** to provide path for program's shortcuts. Click **Next. Select Additional Tasks** dialog box is displayed.
- Choose the check boxes as per your choice. Click **Next. Ready to Install** dialog box is displayed.

- Review the entries. Click **Back** if you want to change them. Click **Install** to start installation. The Installing window shows the installation process.
- After completing the process, **Completing the Stellar Migrator for MS Exchange Setup Wizard** window is displayed. Click **Finish**.

Note: Clear **Launch Stellar Migrator for MS Exchange** check box before clicking **Finish** to prevent the software from launching.

Launching the Software

To launch Stellar Migrator for MS Exchange in Windows 10:

- Click Start icon -> All apps -> **Stellar Migrator for MS Exchange** -> **Stellar Migrator for MS Exchange** . Or,
- Double click **Stellar Migrator for MS Exchange** icon on the desktop. Or,
- Click **Stellar Migrator for MS Exchange** tile on the home screen.

To launch Stellar Migrator for MS Exchange in Windows 8.1 / 8:

- Click **Stellar Migrator for MS Exchange** tile on the home screen. Or,
- Double click **Stellar Migrator for MS Exchange** icon on the desktop.

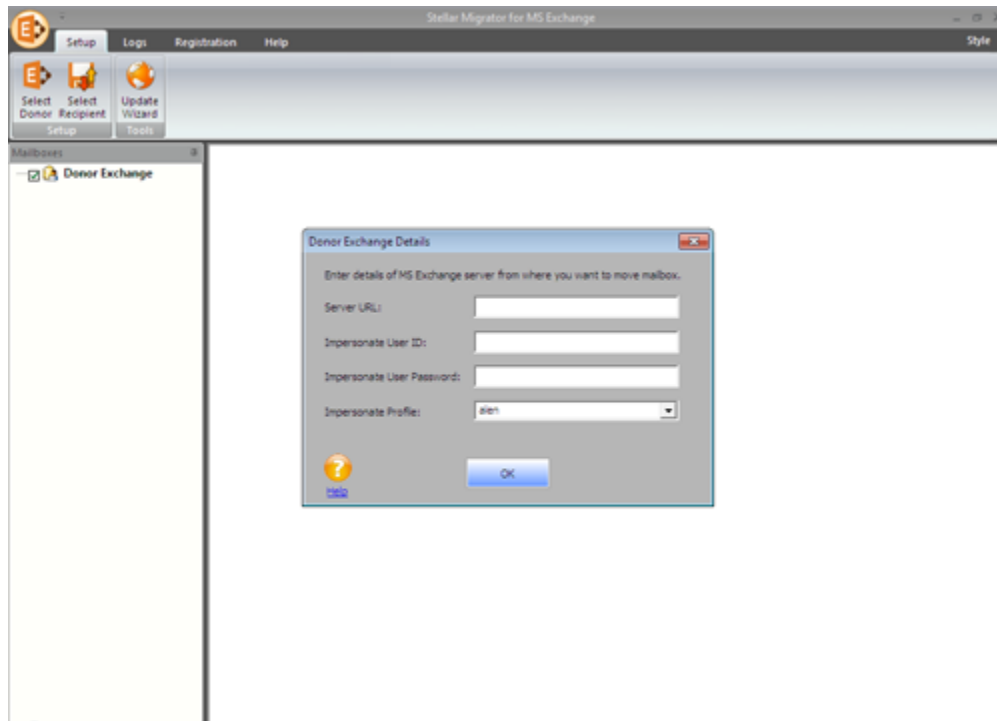
To launch Stellar Migrator for MS Exchange in Windows 7:

- Click Start -> Programs -> **Stellar Migrator for MS Exchange** -> **Stellar Migrator for MS Exchange** . Or,
- Double click **Stellar Migrator for MS Exchange** icon on the desktop. Or,
- Click **Stellar Migrator for MS Exchange** icon in Quick Launch.

User Interface

Stellar Migrator for MS Exchange software has a very easy to use Graphical User Interface.

After launching the software you will see the main user interface as shown below:



The user interface contains Menus and Buttons that allows you to access various features of the software with ease.

Menus

Setup Menu



Select Donor

Use this option to enter the details of MS Exchange server from where you want to export mailboxes.

Select Recipient

Use this option to export mailboxes either in PST format or to the Recipient server.

Update Wizard

Use this option to check for both, latest minor and major versions available online.

Logs Menu



Log Report

Use this option to view / save the log report.

Registration Menu



Registration

Use this option to register the software after purchasing.

Help Menu



Help

Use this option to view the help manual for the software.

Order

Use this option to [buy Stellar Migrator for MS Exchange](#) software.

Support

Use this option to view the [support page](#) of [stellarinfo.com](#)

Knowledgebase

Use this option to visit [Knowledgebase](#) articles of [stellarinfo.com](#)

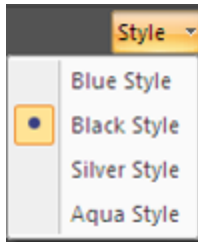
Enquiry

Use this option to [submit enquiry](#) to [stellarinfo.com](#)

About

Use this option to read information about the software.

Style Menu

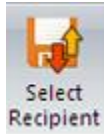


Use this option to switch between various themes for the software, as per your choice.

Buttons



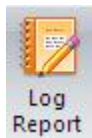
Click this button to enter the details of donor exchange server.



Click this button to export mailboxes either in PST format or to the Recipient server.



Click this button to check for both, latest minor and major versions available online.



Click this button to view / save the log report.



Click this button to register the software after purchasing.



Click this button to view the help manual for the software.



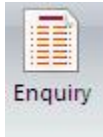
Click this button to buy **Stellar Migrator for MS Exchange** software.



Click this button to view the support page of stellarinfo.com.



Click this button to visit Knowledgebase articles of stellarinfo.com.



Click this button to submit enquiry to stellarinfo.com.



Click this button to read information about the software.

Ordering the Software

Click <http://www.stellarinfo.com/email-tools/migrator-for-exchange.php> to know more about **Stellar Migrator for MS Exchange**.

To purchase the software online, please visit <http://www.stellarinfo.com/email-tools/migrator-for-exchange/buy-now.php>

Alternatively, click **Order** icon in **Help Menu** on **Menu Bar** to purchase the software online.

Select either of the methods given above to purchase the software.

Once the order is confirmed, a serial number will be sent to you through e-mail, which would be required to activate the software.

Registering the Software

You can visit <http://www.stellarinfo.com/email-tools/migrator-for-exchange.php> to download the demo version of **Stellar Migrator for MS Exchange** software. Once you purchase the software, you will receive a key using which you can register the software.

You can register the software using any of the following methods:


- [Online Registration](#)

After purchasing the software, a serial number will be sent via email, which is required to register the software. You need to enter the serial number, which is then verified by a license server and on verification, the software is registered.

- [Manual Registration](#)

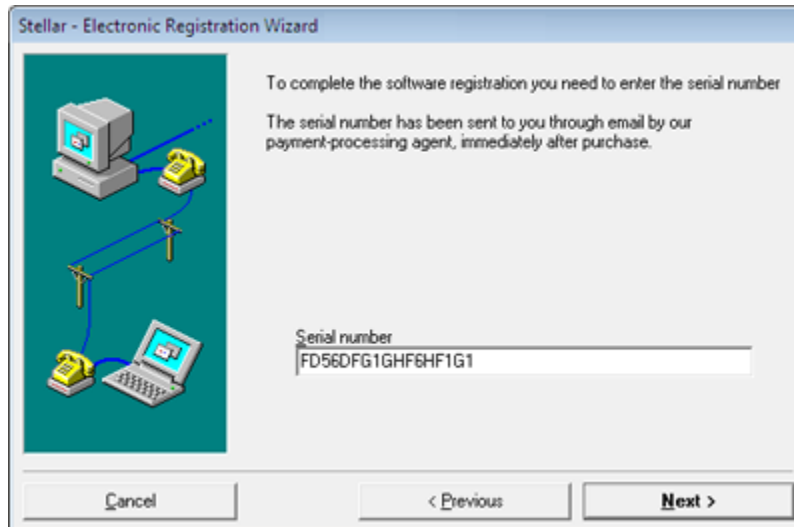
To register the software manually, you will need to generate a PHX_REG.txt file and mail it to support@stellarinfo.com. After verification of the serial number and purchase details, the site key, which is required to register the software manually, will be sent to your email address.

Note: *If the software is downloaded from <http://www.stellarinfo.com/email-tools/migrator-for-exchange.php> (i.e., ESD version), it must be registered using Serial Number (received through email after purchasing the product) to use all the features of the software.*

If the software is installed using the product installation CD (i.e., BOX version), hardware lock , that is available with the software kit, is mandatory for the functioning of the software.

Online Registration

To register the software online:



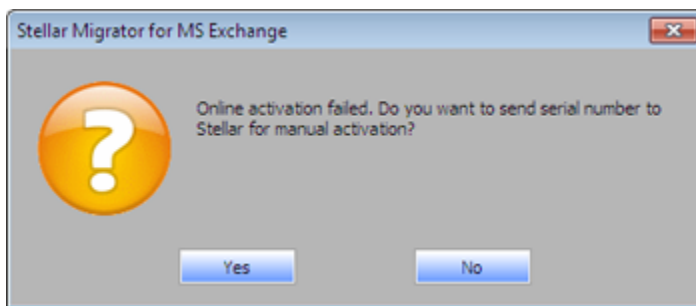
1. Launch demo version of **Stellar Migrator for MS Exchange**.
2. In **Registration Menu** on **Menu Bar**, Click **Registration**.
3. In **Registration Option** dialog box, select **I have the registration key**.
4. Select **Online Registration**. Click **OK**. A warning will appear, click **Yes** to continue.
5. In **Stellar Phoenix - Electronic Registration Wizard**, click **Next**.
6. Type the serial number (received through email after purchasing the product) in serial number field. Click **Next**.
7. The software would automatically communicate with the license server. After the registration is done, click **Finish** to complete the registration process.

Note: You can generate PHX_REG.txt file manually via online activation. View [Manual Registration](#) to perform the process of generating PHX_REG.txt file.

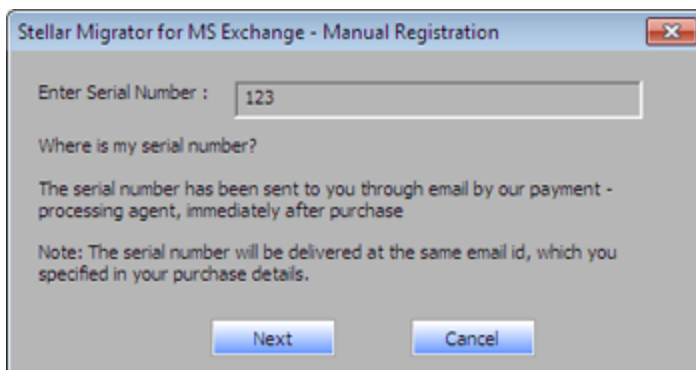
Manual Registration

To register the software manually:

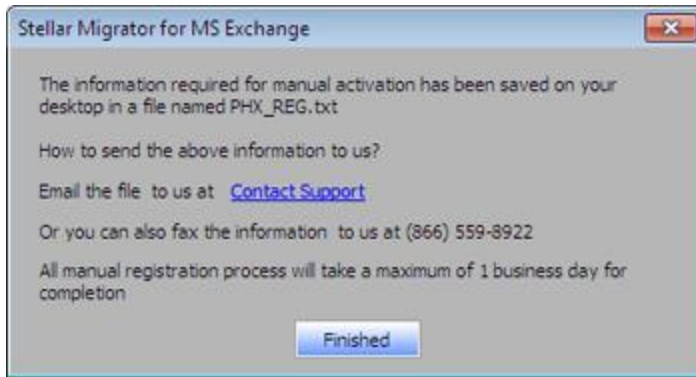
1. Launch demo version of **Stellar Migrator for MS Exchange**.
2. In **Registration Menu** on **Menu Bar**, Click **Registration**.
3. In **Registration Option** dialog box, select **I have the registration key**.
4. Select **Online Registration**. Click **OK**. A warning will appear, click **Yes** to continue.
5. In **Welcome to Stellar Phoenix - Electronic Software Registration** wizard, click **Cancel**.
6. **Stellar Migrator for MS Exchange** dialog box will open, click **Yes**.



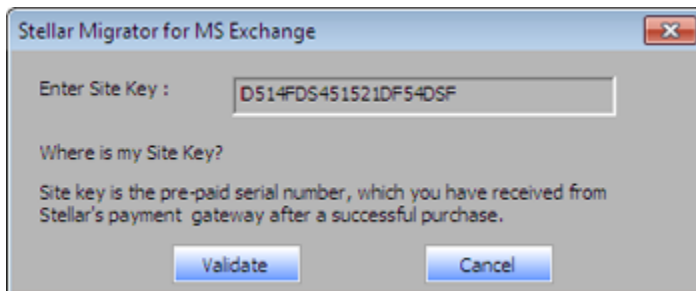
7. In **Manual Registration** dialog box, enter the serial number that you receive once you purchase the software. Click **Next**.



8. A file named PHX_REG.txt is created on your desktop. Email it to support@stellarinfo.com. Click **Finished**.



9. After verifying the purchase details, you will receive the site key, which is required to register the software manually.
10. After receiving the Site Key, open **Stellar Migrator for MS Exchange**. In **Registration Option** dialog box, select **I have the registration key**.
11. Select **Manual Registration** and Click **OK**.
12. Enter the Site Key in **Enter Site Key** dialog box. Click **Validate**.



Note: The site key is delivered to the email address through which the serial number is sent.

Updating the Software

Stellar releases periodical software updates for **Stellar Migrator for MS Exchange** software. You can update the software to keep it up-to-date. These updates can add a new functionality, feature, service, or any other information that can improve the software. Update option of the application is capable of checking for latest updates. This will check for both latest minor and major versions available online. You can easily download minor version through the update wizard. However, the major version, if available, has to be purchased. While updating the software, it's recommended to close all the running programs. Note that demo version of the software cannot be updated.

To update Stellar Migrator for MS Exchange:

- Click **Update Wizard** icon from **Setup** menu.
- **Stellar Phoenix Update Wizard** window opens. Click **Next**. The wizard will search for latest updates, and if it finds any new updates, a window will pop up indicating its availability.
- Click **Next** and the software will download the files from the update server. When the process is complete, the software will upgrade to the latest version.

Live Update may not happen due to following reasons:

- Internet connection failure
- Updates are not available

Note: *If a major version is available, you need to purchase the software in order to upgrade it.*

Stellar Support

Our Technical Support professionals will give solutions for all your queries related to Stellar products.

You can either call us or go online to our support section at <http://stellarinfo.com/support/>

For price details and to place the order, click <http://www.stellarinfo.com/email-tools/migrator-for-exchange/buy-now.php>

Chat Live with an Online technician at <http://stellarinfo.com/>

Search in our extensive Knowledgebase at <http://www.stellarinfo.com/support/kb/>

Submit enquiry at <http://www.stellarinfo.com/support/enquiry.php>

E-mail to Stellar Support at support@stellarinfo.com

Support Helpline

Monday to Friday [24 Hrs. a day]

USA (Tollfree- Pre Sales Queries) +1-877-778-6087

USA (Post Sales Queries) +1-732-584-2700

UK (Europe) +44-203-026-5337

Australia & Asia Pacific +61-280-149-899

Netherlands Pre & Post Sales Support +31-208-111-188

Worldwide +91-124-432-6777

Email Orders orders@stellarinfo.com